



CC Enhancers "Color Concentrates"

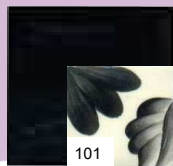
Color Concentrates (CC's) are pure pigment suspended in a gel base that helps facilitate the application of color. They are manufactured as a translucent underglaze on greenware or bisque in the ceramics industry. The Glass Enhancement Color Concentrate kits (CCGKIT #1 & #2) consists of 14 of the most popular colors in 1 & 2 ounce squeeze bottles, Kit #3 is the (CCGKIT #3) is the remainder of the CC's.

Color Concentrates (CC's) may be used to detail and enhance the fired glass enamels with specific techniques. The concentrates should be thinned with water to apply over the dry glass enamels on projects to result in a glossy finish. Applied in its purest form directly on the glass enamels can result in a matte or semi-gloss textured finish.

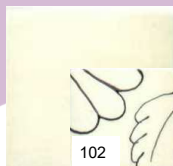
Color Concentrates applied directly to a glass surface to thin will burn off in the firing process. It must either be capped, or applied on top of the glass enamel color. You can stamp on firing paper or glass, use the ink technique and do brushstrokes. They must be capped to be food safe. Some of the **pinks and purples** burn out, see the chart. (See website under "CC Enhancers" for more details)

Firing range from 1225-2020 degrees

Available in 1oz., 2oz. and Pints.



CC101 Cobalt Black



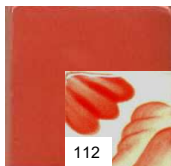
CC102 Glacier White



CC103 Vellum Grey



CC111 Red Geranium



CC112 Candy Apple Red



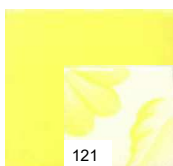
CC114 Coral



CC115 Tangerine Peel



CC116 Florida Orange



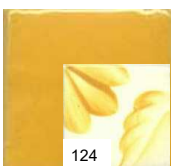
CC121 Maize



CC122 Lemon Peel



CC123 Sunflowers



CC124 Yellow Ochre



CC125 Curry



CC130 Blush Cabernet



CC131 Cabernet



CC132 Deep Cranberry



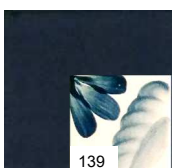
CC135 French Lilac



CC136 Purple Sage



CC137 Bright Violet



CC139 Midnight Blue



CC140 Cobalt Blue



CC142 Blueberry



CC143 Sapphire Blue



CC144 Powder Blue



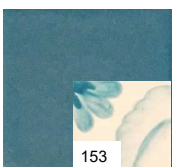
CC150 Light Cerulean



CC151 Cerulean Blue



CC152 Deep Cerulean



CC153 Peacock



CC160 Key Lime



CC161 Green Leaf



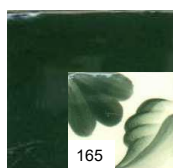
CC162 Laurel Green



CC163 Shadow Green



CC164 Mountain Pine



CC165 Hunter Green



CC180 Burnt Umber



CC181 Nutmeg



CC182 Natural #5



CC185 Sienna



CC186 Burnt Sienna

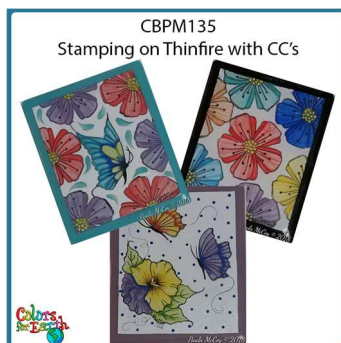


CC187 Raw Umber



LE003 Aqua Splash

Colors for Earth, LLC
Weatherford, TX 76085
www.colorsforearth.com
(817) 677-5020

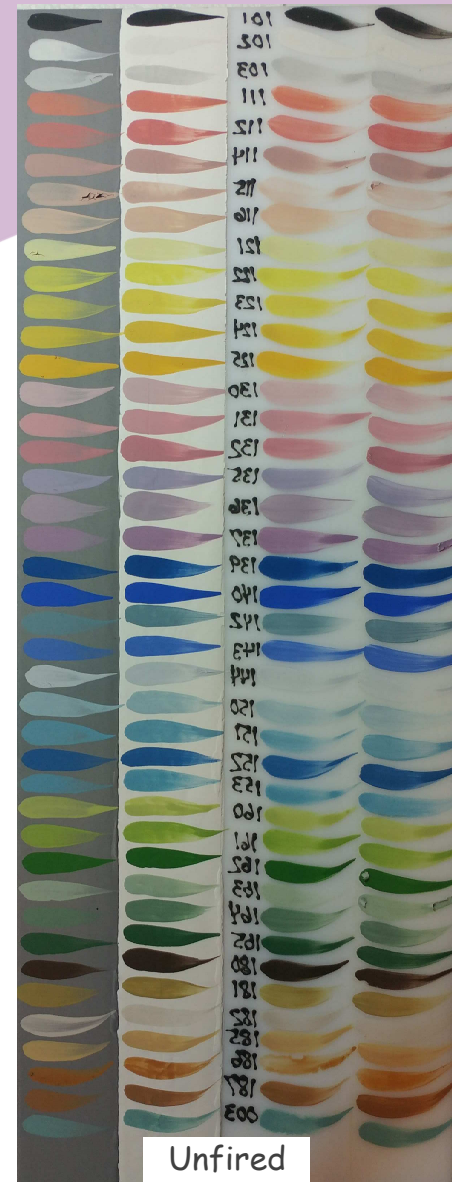




CC Enhancers "Color Concentrates"



This chart shows the CC's used for stamping, brushstrokes and used with a Quill Pen.



Unfired



Fired

- Chip charts were created on opaque white glass (6"x16").
- Divide into 4 parts. 1/4th Etched on left, 1/4th strip on right flooded with G301 Cobalt Black, 1/4th strip (right center) flooded with G302 Glacier White. The other strip on (left center) is left bare glass.
- CC's are brush stroked (pure straight from the bottle) with CFE Class Brush (#455-0).
- Numbers are done with BLFP-Black Low-Fire/No-Fire Piping Paste in piping bottle (#PIPKIT4)
- 1" strip of clear glass was placed over 1/2 black, 1/2 white enamel areas and another one 1/2 over etched and 1/2 over bare glass. This will show you what happens to the color when capped with clear 3mm glass. I sifted clear powdered frit over the area in the middle where the numbers are to have an example of powder capping.