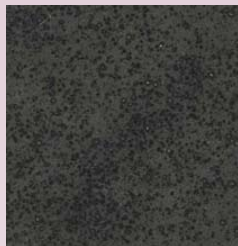
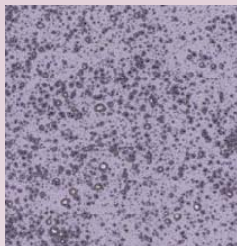


Designer Lava Stone



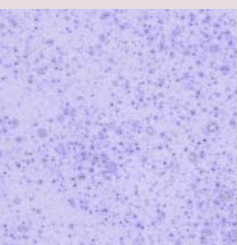
DLS401 Black



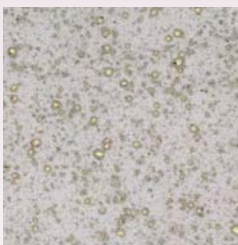
DLS436 Purple



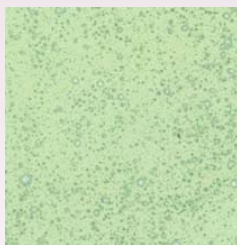
DLS402 White



DLS445 Blue



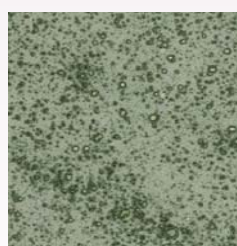
DLS405 Grey



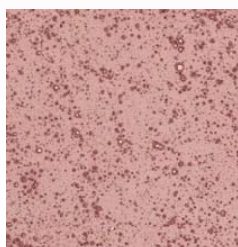
DLS455 Ocean Blue Green



DLS407 Ivory



DLS464 Pine



DLS431 Mauve



DLS487 Raw Sienna



"Designer Lava Stones" are non-moving textured matt glazes that can be used on greenware or bisque. When fired, small craters open up to show the bisque underneath. You can decorate on top of them with our Color Concentrates, Color Stroke underglazes or "Relief Motif" for build up designs as shown on daisy vase.

Firing Range:

- Ceramic—Cone 04-06

Application Suggestions:

- Fan Glaze Brush
- Sponge

Can be Shaded or Stroke work done with:

- Color Concentrates
- Color Strokes

Ceramic Uses:

- Greenware (Still when firing) or cone 04 bisque.
- Color Strokes are recommended for base color under Lava Stones on bisque to change the color of the glaze slightly. The color that is under them will show through when the craters open up.
- DLS402 White can be tinted with Color Concentrates to create endless color possibility.
- Relief Motif is recommended for design build up.
- Not recommended for the inside of food containers

CSP70 Relief Motif can be used for build-up design work on top of these glazes on greenware, bisque or on top of the glaze fired to 06. If glaze has been fired already you will do design work with Relief Motif and re-fire to cone 06.



Available in 4 oz., 8 oz. and pints.



104 Finneyoaks Lane
Weatherford, TX 76085
817-677-5020

www.colorsforearth.com