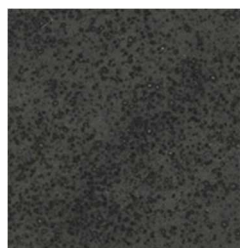
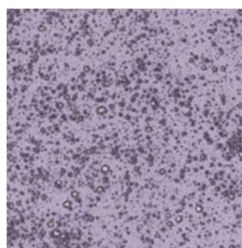


**Designer Lava Stones
(Matt Textured Glazes)**



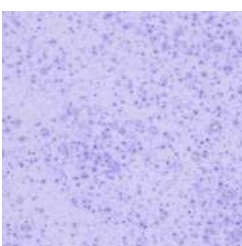
DLS401 Black



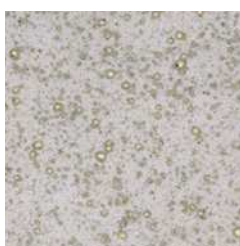
DLS436 Purple



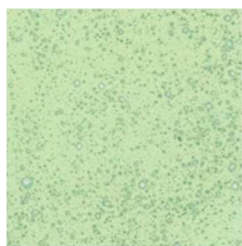
DLS402 White



DLS445 Blue



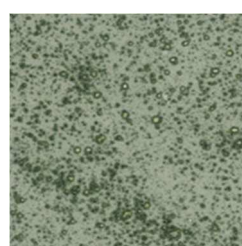
DLS405 Grey



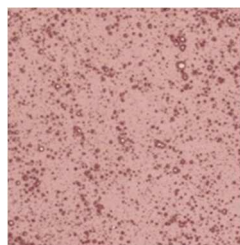
DLS455 Ocean Blue Green



DLS407 Ivory



DLS464 Pine



DLS431 Mauve



DLS487 Raw Sienna



Available in 4 oz., 8 oz. and pints.



Application On Ware Comparisons:

- Sand Stars
- Astro Gems
- Decorator Stones

“Designer Lava Stones” are non-moving textured matt glazes that can be used on greenware or bisque. When fired, small craters open up to show the bisque underneath. You can decorate on top of them with our Color Concentrates, Color Stroke underglazes or "Relief Motif" for build up designs as shown on daisy vase.

Firing Range:

- Ceramic—Cone 04-06

Application Suggestions:

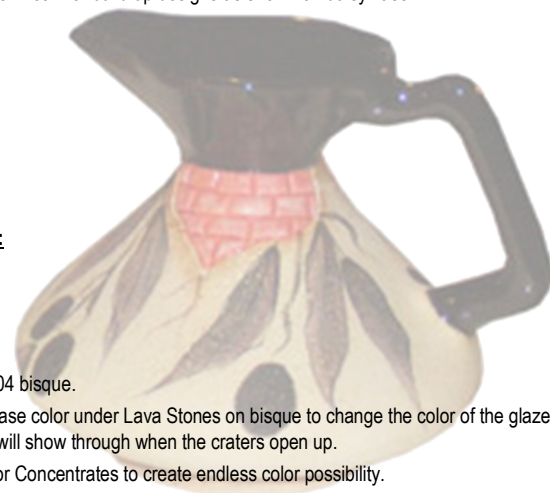
- Fan Glaze Brush
- Sponge

Can be Shaded or Stroke work done with:

- Color Concentrates
- Color Strokes

Ceramic Uses:

- Greenware (Stilt when firing) or cone 04 bisque.
- Color Strokes are recommended for base color under Lava Stones on bisque to change the color of the glaze slightly. The color that is under them will show through when the craters open up.
- **DLS402 White** can be tinted with Color Concentrates to create endless color possibility.
- Relief Motif is recommended for design build up.
- Not recommended for the inside of food containers



CSP70 Relief Motif can be used for build-up design work on top of these glazes on greenware, bisque or on top of the glaze fired to 06. If glaze has been fired already you will do design work with Relief Motif and re-fire to cone 06.

Designer Lava Stone Glazes

Majolica work: Lava Stone glazes can be used under design work as base glaze. Remember that the glaze is textured and this will effect your design.

Apply 3-4 smooth and even coats on ware. Color Concentrates, Color Strokes and other Lava Stone colors can be applied over these glazes. They will be matt in finish unless you add CSP01 Gloss Medium to Color Concentrates or Color Strokes for a glossy look to stroke work.

CSP70 Relief Motif can be used for build-up design work on top of these glazes on greenware, bisque or on top of the glaze fired to 06. If glaze has been fired already you will do design work with Relief Motif and re-fire to cone 06.

Tinting: When tinting **DLS402 White Lava Stone** you should never go more than 50/50 with Color Concentrate and Lava Stone. We recommend 2 parts Lava Stone white and 1 part Color Concentrate.

Endless colors at your fingertips. You can even create a red lava stone color and many more as shown here. Colors listed below each chip is the color used to tint the DLS402 White Lava Stone.



CC112 Candy Apple Red



CC116 Florida Orange



CC122 Lemon Peel



CC137 Bright Violet



CC143 Sapphire Blue

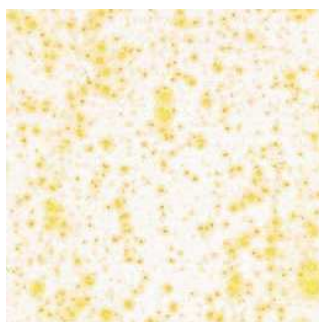


CC151 Cerulean Blue

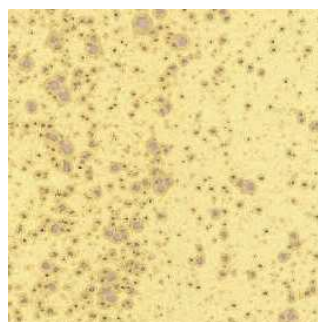
Below are examples of some color combinations. Colors Strokes are applied 2 coats underneath the Designer Lava Stone Glazes.



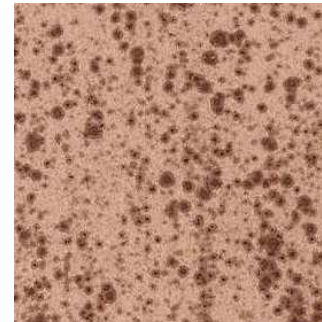
**DLS402 White/
CS601 Coal Black**



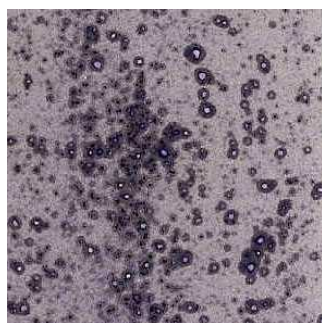
**DLS402 White/
CS623 Buttercup**



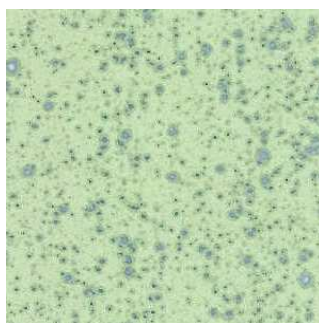
**DLS407 Ivory/
CS638 Orchid Bloom**



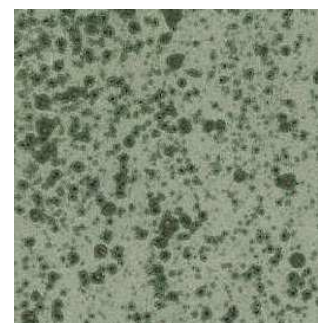
**DLS431 Mauve/
CS632 Deep Crimson**



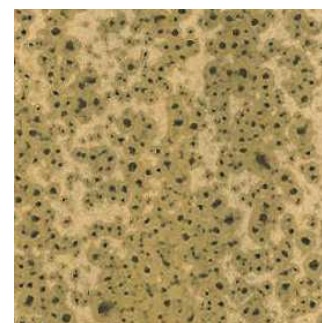
**DLS436 Purple/
CS640 Navy Blue**



**DLS455 Ocean Blue
Green/CS651 Cerulean
Blue**



**DLS464 Pine/
CS681 Warm Wood**



**DLS487 Raw Sienna/
CS680 Burnt Umber**