



Eileen's Tulip

(This piece was done on earthenware but can be done on cone 6 clay body also.)

by: Paula McCoy
2025

This piece can be done on earthenware 010 or Greenware but can be done on stoneware 04 bisque also.

Supply List

CC101 Cobalt Black
CC102 Glacier White
CC103 Vellum Grey
CC111 Red Geranium
CC116 Florida Orange
CC122 Lemon Peel
CC124 Yellow Ochre
CC161 Leaf Green
CC163 Shadow Green
CC164 Mountain Pine
CC165 Hunter Green
CSP01 Gloss Medium (Earthenware only 04/06 clear glaze)
SW004 Zinc Free Clear Glaze by Mayco (Stoneware only)

Other Supplies

Tissue Paper
Ultrafine Sharpie Marker (Cone 6)
Staedtler TriPlus Fineliner—Watercolor marker (Cone 04/06)
1" Foam Craft Brush
Pencil
Mister Bottle for water

Brushes

Small and Medium Sumi
3600 #2 Liner
1426—1" Mottler
1428 Size 20 Stencil Brush (any size will work)

- Trace pattern on the tissue paper with a pencil. Then transfer to 010 soft fire bisque using an ultrafine sharpie marker (cone 6) or Staedtler TriPlus Fineliner (cone 04/06) by going over the pencil lines. The marker will burn off in the firing. DO NOT use the ultrafine sharpie marker directly on the bisque. This can be done on greenware, 04 earthenware or stoneware.
- Create a wash out of **CC102 Glacier White**. With medium Sumi brush, slip/slap, moosh/moosh over the background. Then create a wash out of **CC103 Vellum Grey**. Using the 1" Mottler brush create striations of grey vertically in the background. This brush will allow the brush marks to be seen since it is a stiffer brush.

If you get this inside your flower or leaves you can rinse the mottler brush out and use clean water to wipe out the grey in those areas if needed. Being a stiffer brush it makes it easy to clean out the areas.



- Tulip: Sumi shade the tops of the petals with the small sumi brush and **CC122 Lemon Peel**.

Create shading by sumi shading **CC124 Yellow Ochre** at the bottom of each petal and where one overlaps the other. See Photos. Add more shading by sumi shading **CC116 Florida Orange** and then add a little **CC111 Red Geranium**.

Add some green at the bottom of the center large petal by sumi shading with **CC161 Leaf Green**. Also, pull some fine lines of this color up into the petal with the 3600-#2 Liner brush.

Calyx: Load the 3600 #2 liner brush with **CC161 Leaf Green/CC164 Mountain Pine**. Start at the stem and pull these lines out making it thicker on some of it and then a fine point. The more pressure the thicker the stroke.

- Leaves: Sumi shade along the top side of the leaves with **CC161 Leaf Green**. Sumi shade the bottom side with **CC164 Mountain Pine**. You can add some **CC124 Yellow Ochre** on the turn back and on the top side of some of the leaves for a different color.

Add a tiny bit of **CC165 Hunter Green** (Sumi Shade) on the bottom of the leaves and along the bottom side of the center vein.

- Drippy Background: With medium Sumi brush, load with water and tip into **CC164 Mountain Pine/CC161 Leaf Green/CC124 Yellow Ochre/CC122 Lemon Peel** and create a drippy background around the tulip. Refer to video and photos.

Eileen's Tulip

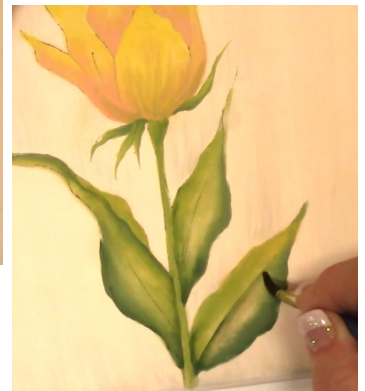
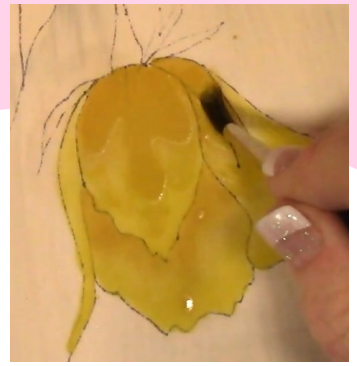
by: Paula McCoy
2025

6. Stencil: If using a stencil, you can stencil on **CC103 Vellum Grey** using the Stencil brush. Let the stencil go off the edge and make it fade out as you get close to the design. See photo.
7. Edge: Sumi shade around the edge off the tile by water loading the medium Sumi brush and tip into **CC103 Vellum Grey** and float the color around the edge.
8. Detail: With **CC101 Cobalt Black** and the liner brush, detail your piece.
9. Bisque fire if using greenware.
10. Apply 2 coats of clear glaze. Use the glaze appropriate for your clay body.

I use CSP01 Gloss Medium NT Clear for earthenware. Stilt and fire.

I use SW004 Zinc Free Clear by Mayco on stoneware and porcelain. Wax the foot of your piece and fire to cone 6.

Happy Painting! Paula McCoy 4-2025





Eileen's Tulip

Pattern

© 2025 Paula McCoy

