

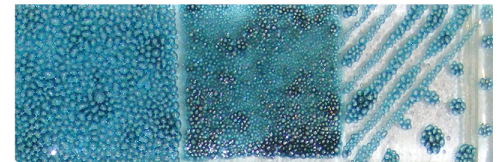
# BubbleART



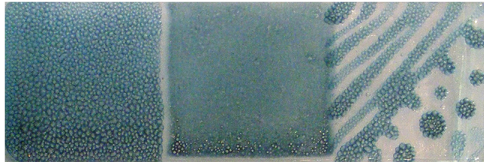
BA5002 Ice White



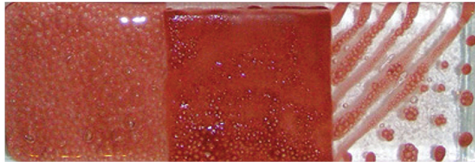
BA5031 Pink



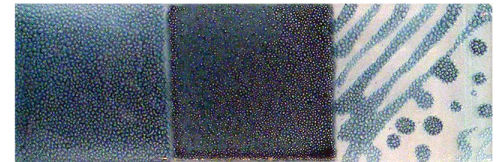
BA5051 Cerulean Blue



BA5003 Aqua Splash



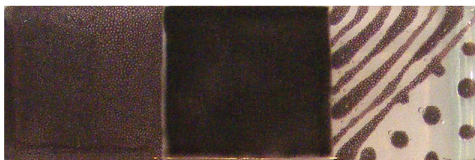
BA5032 Burgandy



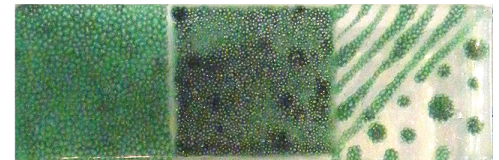
BA5052 Deep Cerulean



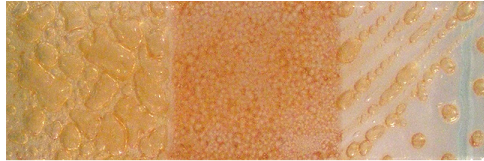
BA5005 Grey



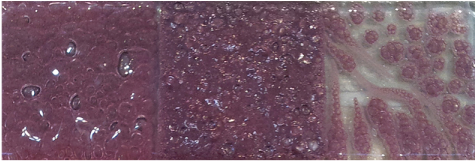
BA5037 Red Violet



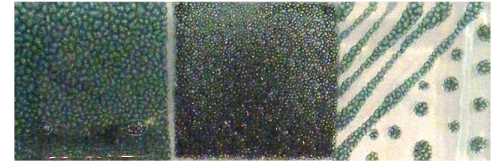
BA5062 Laurel Green



BA5006 Parchment



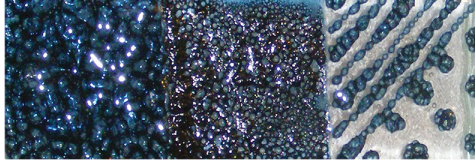
BA5039 Plum



BA5064 Pine



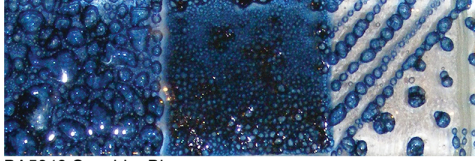
BA5017 Crabapple



BA5040 Navy



BA5024 Butterscotch



BA5043 Sapphire Blue



## Glitz

Glitz are great to work with and can be used to accent your glass designs and ceramic glazed surfaces. They can be used on glass or ceramic surfaces. These colors can be used alone or added to any other "G" series glass enamels. Testing is recommended.

Available in 1/2 oz. jars. Non-Toxic.

Can be used on top of glass or between. They are not meant for a overall coverage but as a added highlight/Glitz or a accent to your design. When capped you will diminish the metallic finish slightly. Shake well until metallic releases from the bottom of the jar. Then, stir well to make sure that they are completely mixed. Keep mixed up while working as the metallic's will fall to the bottom of jar. After firing, wash/brush off any burn off residue on the surface.

NOT recommended to apply color on top of Glitz. This could cause the color to repel or pull back. Testing is recommended. These can be used on top of ceramic glazed surfaces as a third fire accent also.



www.colorsforearth.com  
817-677-5020

